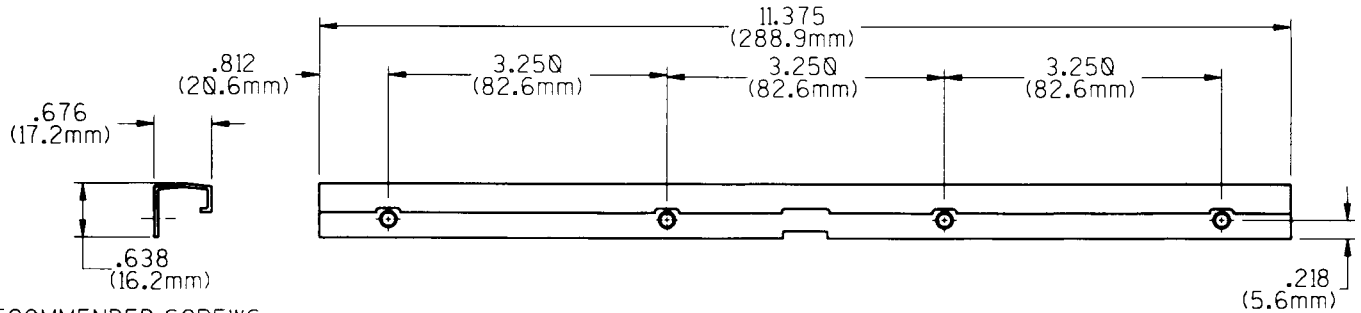


Dual Arm Operator Brackets

ROBERT BROOKE AND ASSOCIATES

FIG. 3 CASEMENT OPERATOR (4 HOLE) TRACK 30473 AND 30756 (SST)



RECOMMENDED SCREWS:

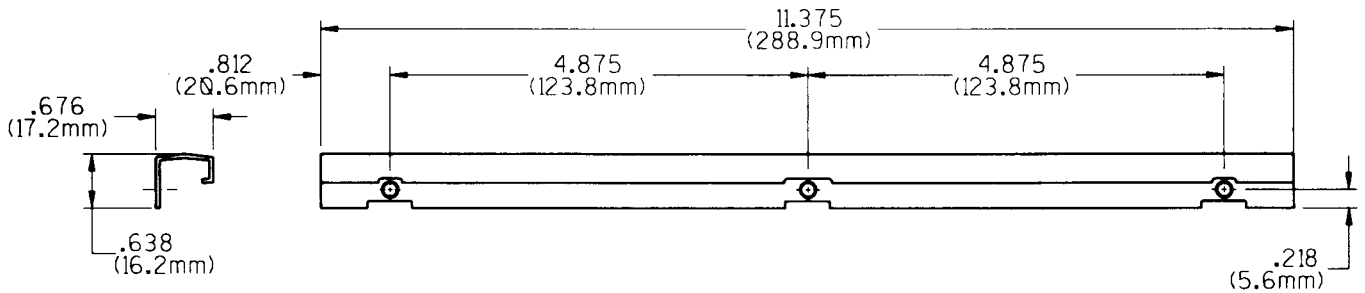
WOOD/STEEL: 4 (P/N 1914Q) #7 X .875 PHILLIPS, FLAT HEAD, SHEET METAL SCREWS

SST: 4 (P/N 1914I) #7 X .875 PHILLIPS, FLAT HEAD, STAINLESS STEEL SHEET METAL SCREWS

STEEL	SST
30473	30756

PVC/METAL: 4 - #7 PHILLIPS, FLAT HEAD SCREWS (LENGTH AND THREAD TYPE DETERMINED BY PROFILE)

FIG. 4 CASEMENT OPERATOR (3 HOLE) TRACK 30706 AND 40617 (SST)



RECOMMENDED SCREWS:

WOOD/STEEL: 3 (P/N 1914Q) #7 X .875 PHILLIPS, FLAT HEAD, SHEET METAL SCREWS

SST: 3 (P/N 1914I) #7 X .875 PHILLIPS, FLAT HEAD, STAINLESS STEEL SHEET METAL SCREWS

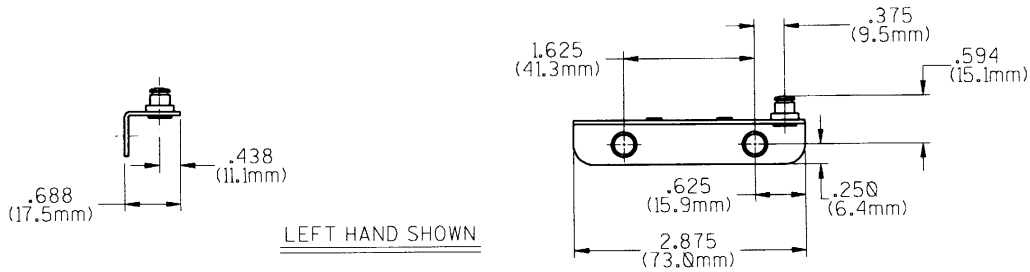
STEEL	SST
30706	40617

PVC/METAL: 4 - #7 PHILLIPS, FLAT HEAD SCREWS (LENGTH AND THREAD TYPE DETERMINED BY PROFILE)

Dual Arm Operator Brackets

ROBERT BROOKE AND ASSOCIATES

FIG. 6 STUD BRACKET 10339, 10340 AND 10487, 10488 (SST)



RECOMMENDED SCREWS:

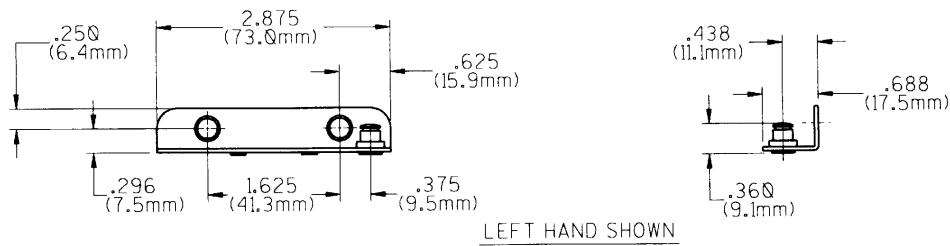
WOOD/STEEL: 2 (P/N 19140) #7 X .875 PHILLIPS, FLAT HEAD, SHEET METAL SCREWS

SST: 2 (P/N 19141) #7 X .875 PHILLIPS, FLAT HEAD, STAINLESS STEEL SHEET METAL SCREWS

PVC/METAL: 2 - #7 PHILLIPS, FLAT HEAD SCREWS (LENGTH AND THREAD TYPE DETERMINED BY PROFILE)

STEEL	SST
10339-LH	10487-LH
10340-RH	10488-RH

FIG. 7 STUD BRACKET 10402, 10403 AND 10963, 10964 (SST)



RECOMMENDED SCREWS:

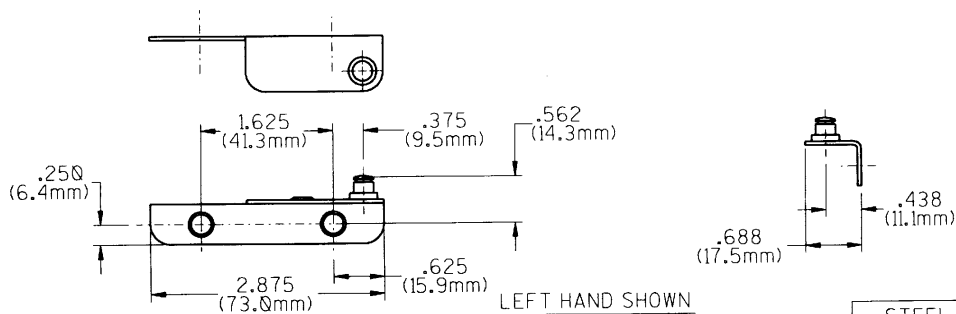
WOOD/STEEL: 2 (P/N 19140) #7 X .875 PHILLIPS, FLAT HEAD, SHEET METAL SCREWS

SST: 2 (P/N 19141) #7 X .875 PHILLIPS, FLAT HEAD, STAINLESS STEEL SHEET METAL SCREWS

PVC/METAL: 2 - #7 PHILLIPS, FLAT HEAD SCREWS (LENGTH AND THREAD TYPE DETERMINED BY PROFILE)

STEEL	SST
10402-L.H.	10963-L.H.
10403-R.H.	10964-R.H.

FIG. 8 STUD BRACKET 10498, 10499 AND 10838, 10839 (SST)



RECOMMENDED SCREWS:

WOOD/STEEL: 2 (P/N 19140) #7 X .875 PHILLIPS, FLAT HEAD, SHEET METAL SCREWS

SST: 2 (P/N 19141) #7 X .875 PHILLIPS, FLAT HEAD, STAINLESS STEEL SHEET METAL SCREWS

PVC/METAL: 2 - #7 PHILLIPS, FLAT HEAD SCREWS (LENGTH AND THREAD TYPE DETERMINED BY PROFILE)

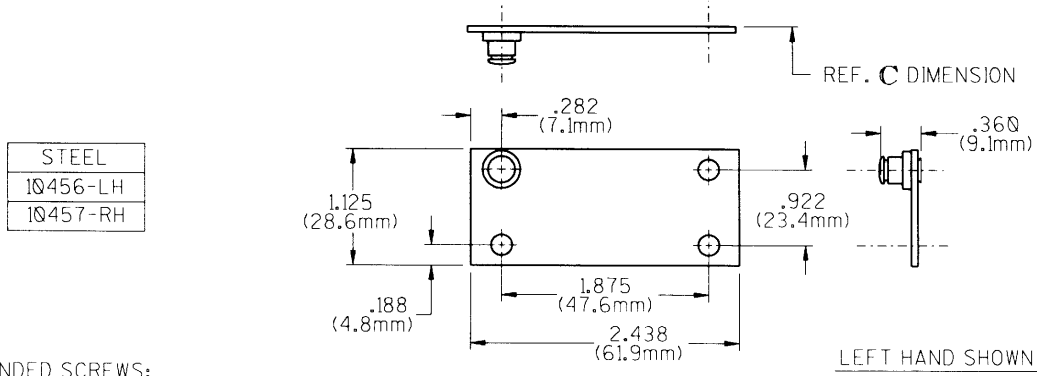
STEEL	SST
10498-L.H.	10838-L.H.
10499-R.H.	10839-R.H.

585 SOUTH ETON ROAD, P.O. BOX 2010, BIRMINGHAM, MI 48012-2010
CALL: 1-800-642-2403 FAX: 1-800-642-2406 ASK FOR: GREG

Dual Arm Operator Brackets

ROBERT BROOKE AND ASSOCIATES

FIG. 9 STUD BRACKET 10456 AND 10457

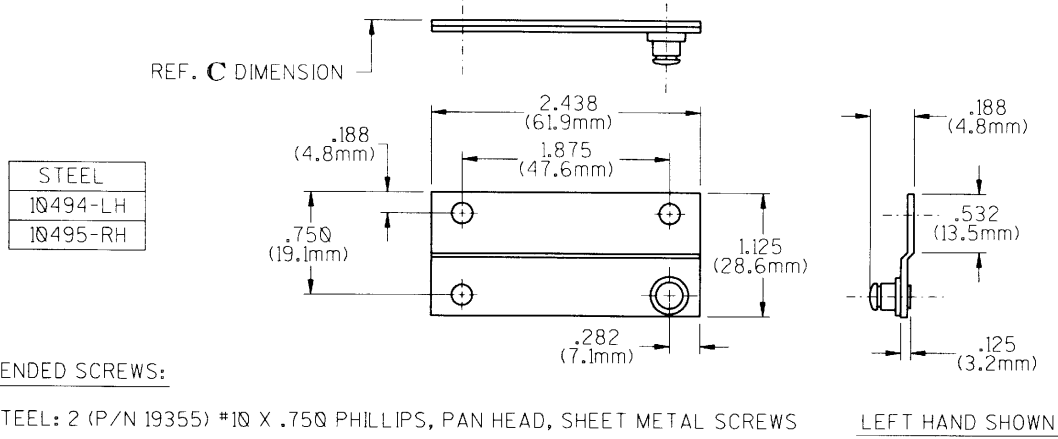


RECOMMENDED SCREWS:

WOOD/STEEL: 2 (P/N 19355) #10 X .750 PHILLIPS, PAN HEAD, SHEET METAL SCREWS

PVC/METAL: 2 - #10 PHILLIPS, PAN HEAD SCREWS (LENGTH AND THREAD TYPE DETERMINED BY PROFILE)

FIG. 10 STUD BRACKET 10494 AND 10495

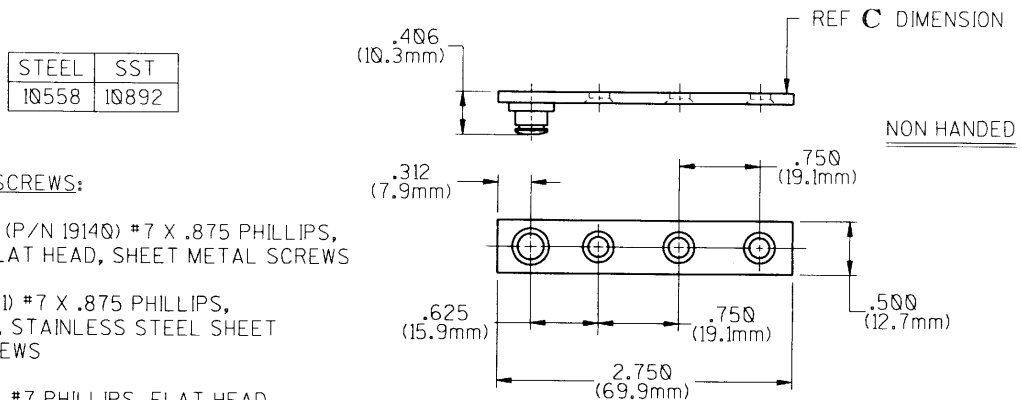


RECOMMENDED SCREWS:

WOOD/STEEL: 2 (P/N 19355) #10 X .750 PHILLIPS, PAN HEAD, SHEET METAL SCREWS

PVC/METAL: 2 - #10 PHILLIPS, PAN HEAD SCREWS (LENGTH AND THREAD TYPE DETERMINED BY PROFILE)

FIG. 11 STUD BRACKETS 10558 AND 10892 (SST)



RECOMMENDED SCREWS:

WOOD/STEEL: 3 (P/N 19140) #7 X .875 PHILLIPS, FLAT HEAD, SHEET METAL SCREWS

SST: 3 (P/N 19141) #7 X .875 PHILLIPS, FLAT HEAD, STAINLESS STEEL SHEET METAL SCREWS

PVC/METAL: 2 - #7 PHILLIPS, FLAT HEAD SCREWS (LENGTH AND THREAD TYPE DETERMINED BY PROFILE)

585 SOUTH ETON ROAD, P.O. BOX 2010, BIRMINGHAM, MI 48012-2010
CALL: 1-800-642-2403 FAX: 1-800-642-2406 ASK FOR: GREG